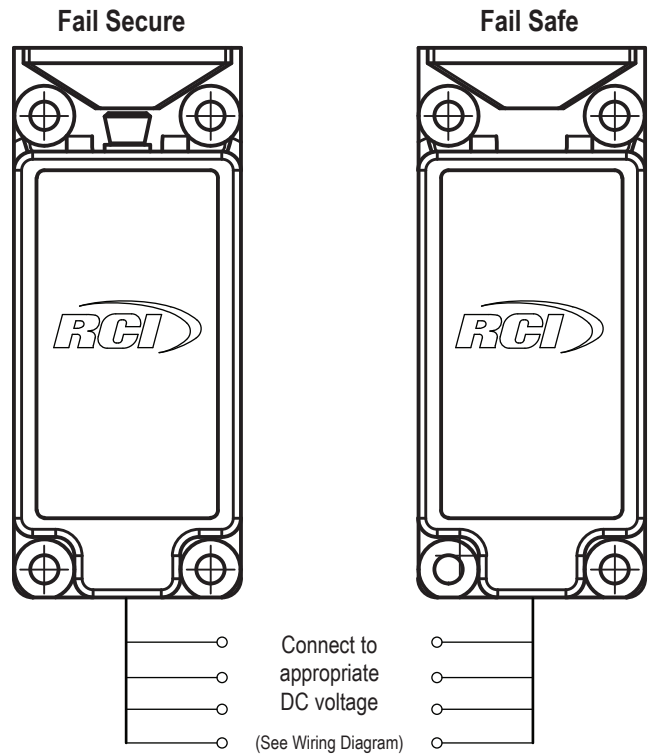


INSTALLATION

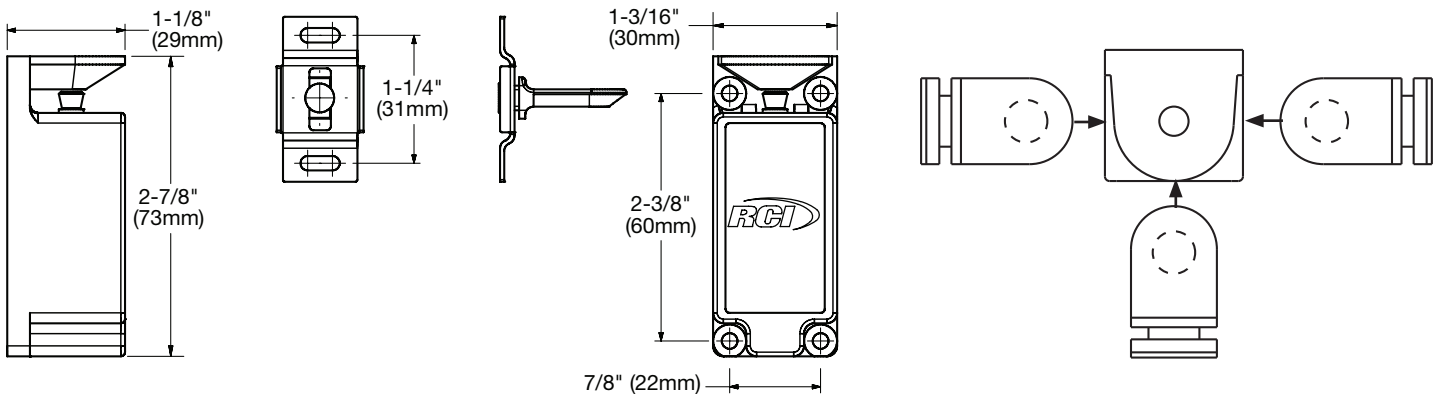
RCI 3513 CABINET LOCK

Instructions For Lock Mode Change

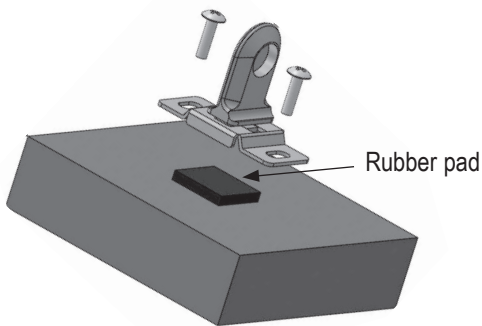
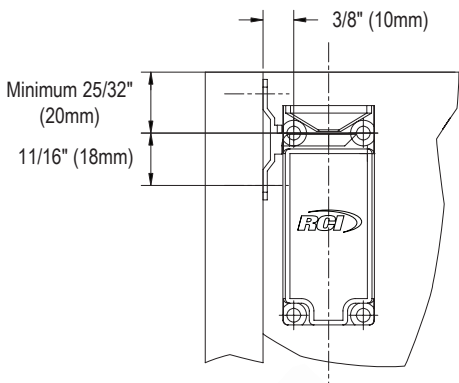
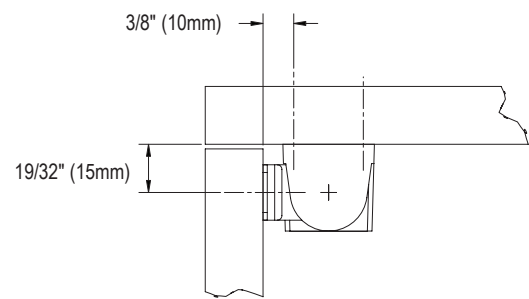
1. Remove the 4 screws on the bottom.
2. Remove base plate and solenoid.
3. Turn assembly 180° and re-route wires to cut out.
4. Install into housing and insert the 4 screws.



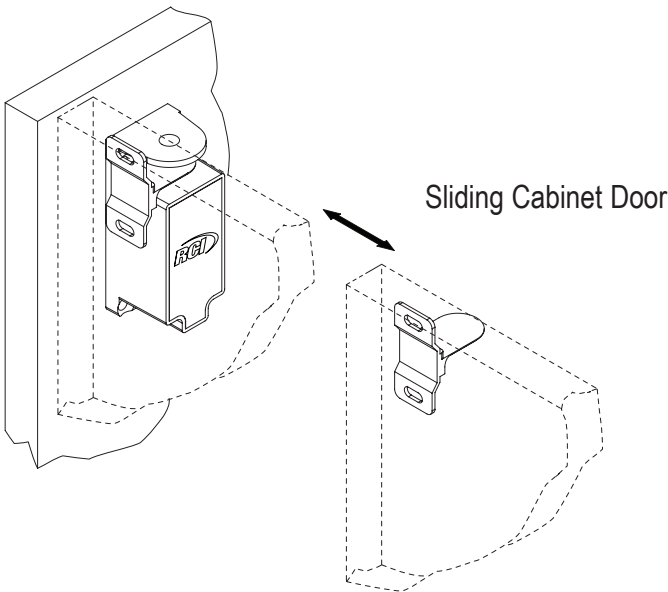
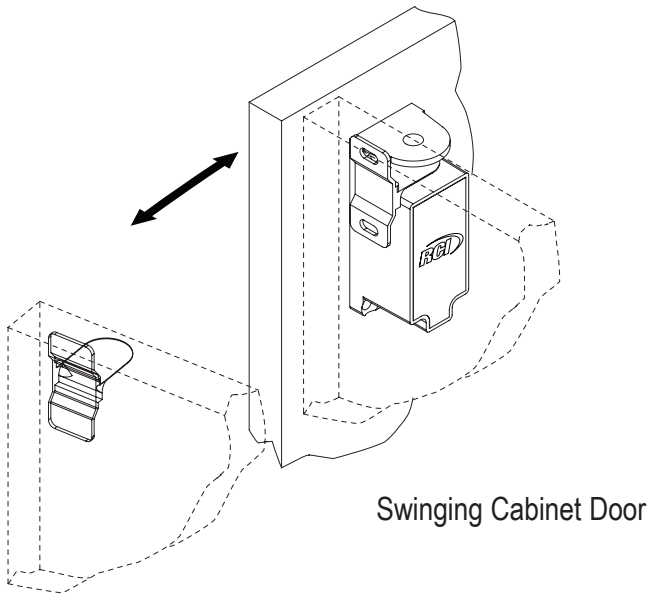
Overall and Mounting Dimensions



Installation Dimensions



Install rubber pad in between the mounting surface and catch to secure catch position



Cabinet Lock Dual Voltage Wiring Diagram

