



**ILCO UNICAN CORP.**

2941 INDIANA AVENUE • WINSTON-SALEM, NORTH CAROLINA 27105 • TEL.: (910) 725-1331 FAX.: (910) 725-3269

September 19, 1997

## Unican Lock 3000 series Templates: *SPECIAL NOTES*

The attached pages represent dimension and reference information for assistance with installing the 3000 series drive assembly.

The miscellaneous cut sheets from the installation instructions are illustrated only to provide a view of how the templates are used.

( note: these pages do not constitute the complete instructions )

The actual templates are cardboard templates included with each drive assembly. There are four available templates representing each hand and backset situation.

The template dimension information is provided in this document to allow you to approach the installation and qualify the door and frame.

**DO NOT USE THE FAXED TEMPLATES AS A DIRECT TEMPLATE**

It is recommended that you call our literature department and request the specific template be sent to you for correct installation. That number is 1-800-849-8324 ext. 232.

# SIMPLEX SERIES 3000 NARROW STILE LOCK

## INSTALLATION INSTRUCTIONS FOR DRIVE ASSEMBLY

**Installation Instructions Include:** Mounting of the 3000 Narrow Stile combination lock to the Adams-Rite 4510 and 4710 series latch sets. See Adams-Rite mounting instructions for latch set prepping. (For installation instructions of combination lock housing see combination lock housing box marked model 3000-1 or 3000-2.)

### PACKAGE INCLUDES:

- drive assembly
- cam plug (Adams-Rite #4580) (1)
- cardboard template (1)
- installation instructions
- cam plug cover (31/32" backset only) (1)
- lower drive assembly mounting screws 10-24 thd. x 1-1/2" long P.R.H.M.S. (part #54275) (2)
- lower drive assembly mounting bushing "D" shape threaded (part #44226) (2)
- lower drive assembly mounting bushing "O" shape unthreaded (part #44229) (2)
- drive assembly securing screws (#6 sheet metal) (part #54284) (2)

### TOOLS REQUIRED FOR INSTALLATION:

- tape
- electric drill
- flat head small and medium screwdriver and Phillips head large screwdriver
- center punch
- (3/32") drill bit
- (3/8") drill bit
- (7/8") hole saw
- (1/8") drill bit
- (1/4") drill bit
- hammer
- deburring tool
- safety goggles

### HARDWARE DISASSEMBLY

**Step 1: (Figure 1)**  
Remove Adams-Rite face plate from edge of door exposing the cylinder set screws. (See Fig. 1)

**Step 2: (Figure 1)**  
Loosen the cylinder set screw (securing key cylinder to Adams-Rite latch) and remove the cylinder from the dead latch assembly. (See Fig. 1)

**Step 3: (Figure 1)**  
With the exception of the Adams-Rite dead latch assembly, remove all other hardware from door, knob, handle, etc. (See Fig. 1)

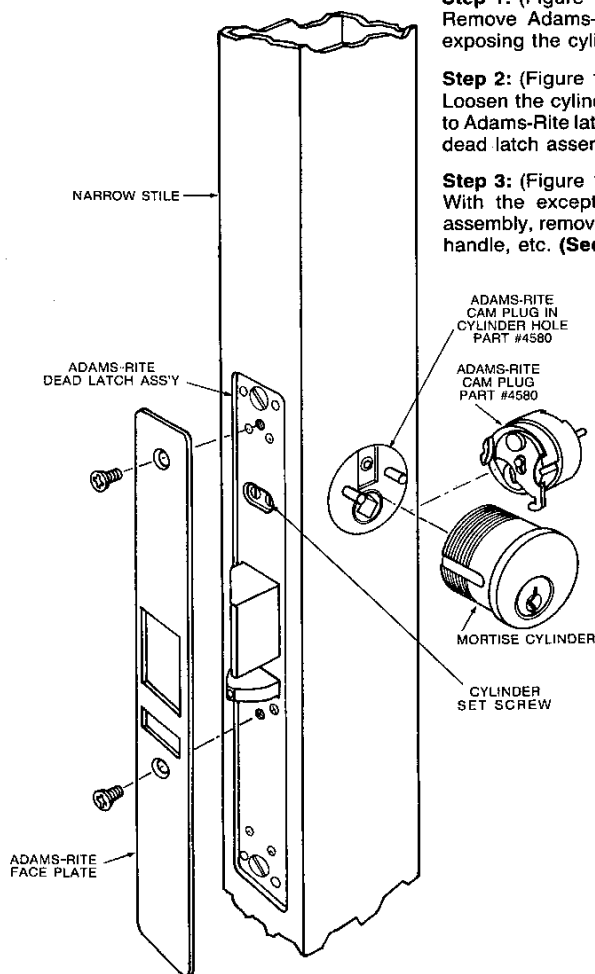


FIGURE 1

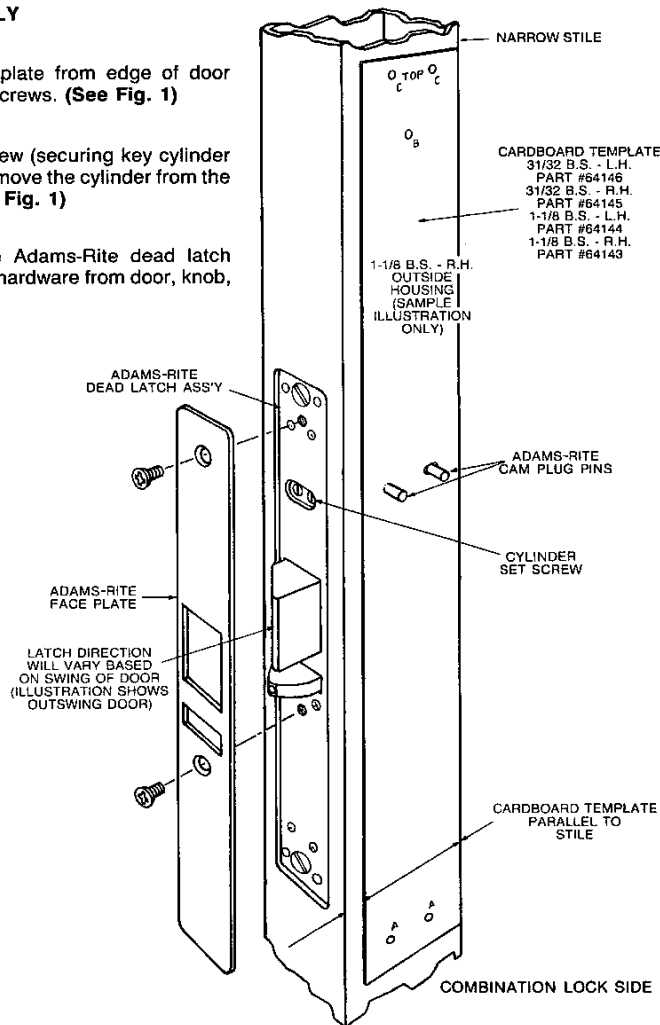


FIGURE 2

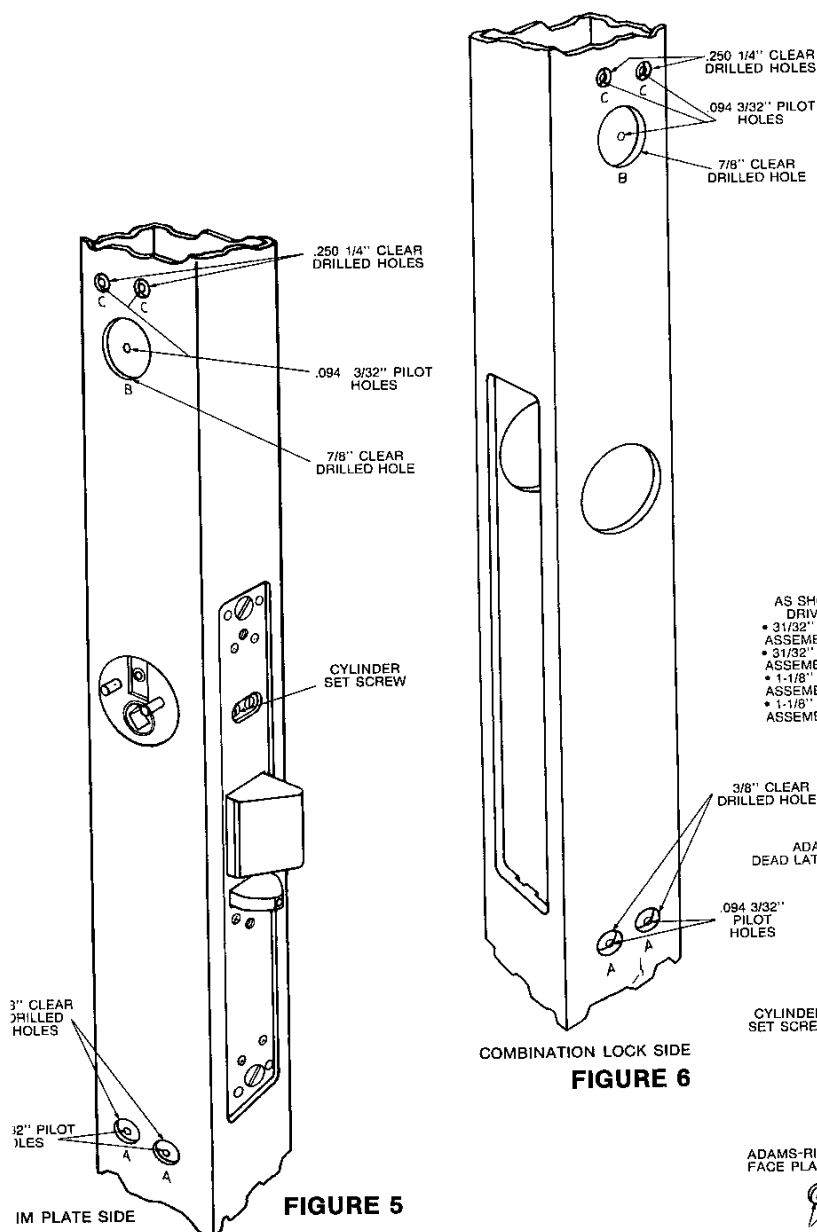
## SIMPLEX ACCESS CONTROLS

Division of ILCO UNICAN Corp.

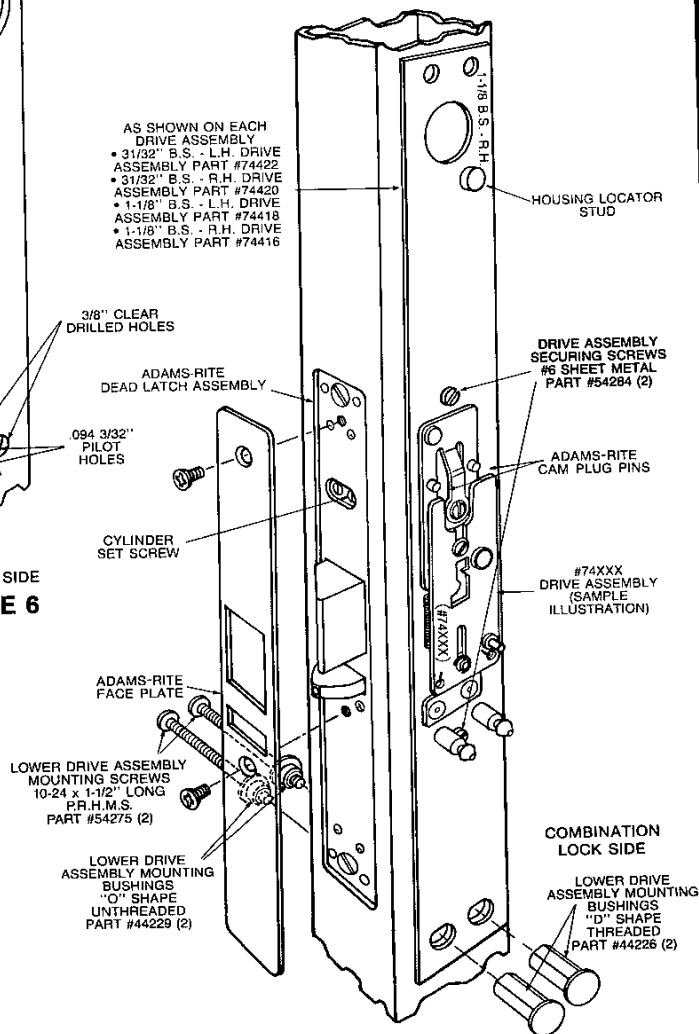
2941 Indiana Avenue, P.O. Box 4114, Winston Salem, NC 27115-4114

TEL.: (919) 725-1331 • FAX: (919) 725-3269 • FAX: (800) 346-9640

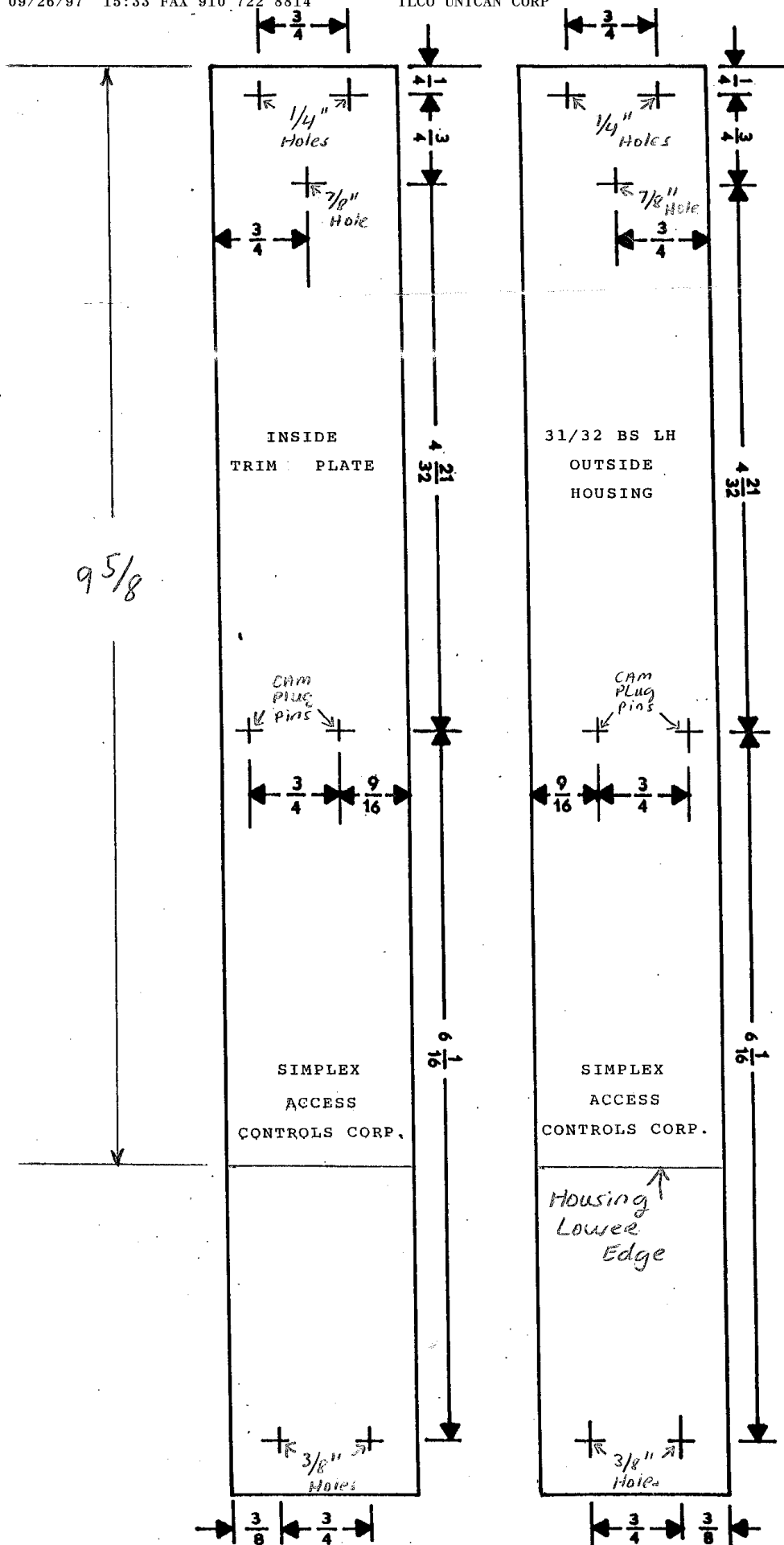
**\*Note:** For 31/32" backset, a cam plug cover is provided for covering the partially exposed cylinder hole in the stile. Place cover over cam plug pins before assembling drive assembly.



**Step 12:** (Figures 5 and 6)  
You are now ready to drill holes marked A, B and C on both sides of the plate. Enlarge holes to sizes as follows: (**See Fig. 5 and 6**) Referencing the hole identification on figures 5 and 6, enlarge 2 holes marked A to a .375 diameter (3/8") drill bit. Enlarge 1 hole marked B to a .875 diameter (7/8") hole saw. Enlarge 2 holes marked C to a .250 diameter (1/4") drill bit. Make sure that all holes are deburred prior to hardware assembly.



**FIGURE 7**



3000-20

Do Not Scale