

## Procedure to return virgin mode for 790 lock without override

### Tools Required

Torx Screwdrivers (T10 and T15) and Override Switch Assy. for 760 (101-510672)



### STEP 1.

Take out the battery pack and open the plate on back of the 790 front housing.



### STEP 2.

Plug the switch in position.



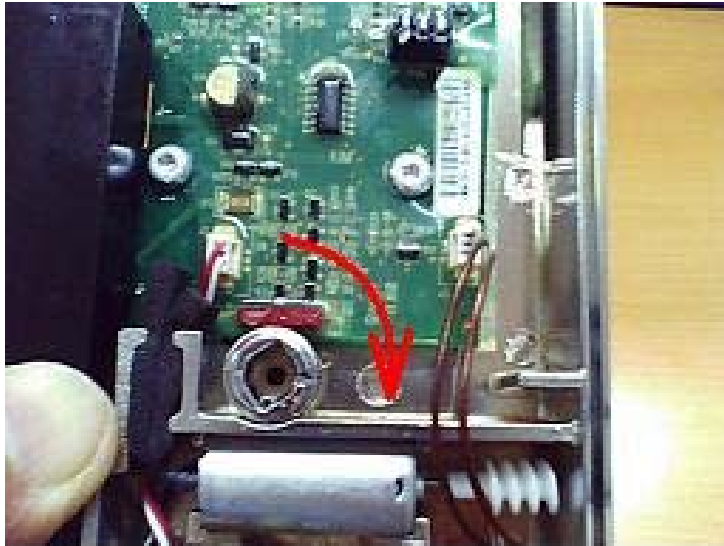
### STEP 3.

Install battery pack, then the Green LED flash once and Motor action.



#### STEP 4.

Turn on the Cam Turn Knob in 90 degree.



#### STEP 5.

Press and hold the switch then the green will flash.



#### STEP 6.

Release the switch after the green flash.



#### STEP 7.

Restore the position of the Cam Turn Knob. The lock has been returned to virgin mode.

