

- NOTES:
 1- USE DIMENSIONS FROM DIAGRAM A TABLE TO ADJUST BACK-SET POSITION ACCORDING TO LOW AND HIGH BEVEL DOOR EDGE.
 2- DIMENSIONS ARE SYMMETRICAL ABOUT ϕ UNLESS OTHERWISE NOTED.
 3- DEPTH MEASURED FROM THE FRONT OF DOOR, ON THE CENTER LINE ϕ .
 4- THIS DRAWING HAS SPECIFIC TOLERANCES:

DISTANCES	$\pm .030$ [$\pm .75$]
HOLES ϕ	$\phi \pm .010$ [$\pm .25$]
DIMS MARKED #	$+ .030 / - .000$ [$+ .75 / - .00$]

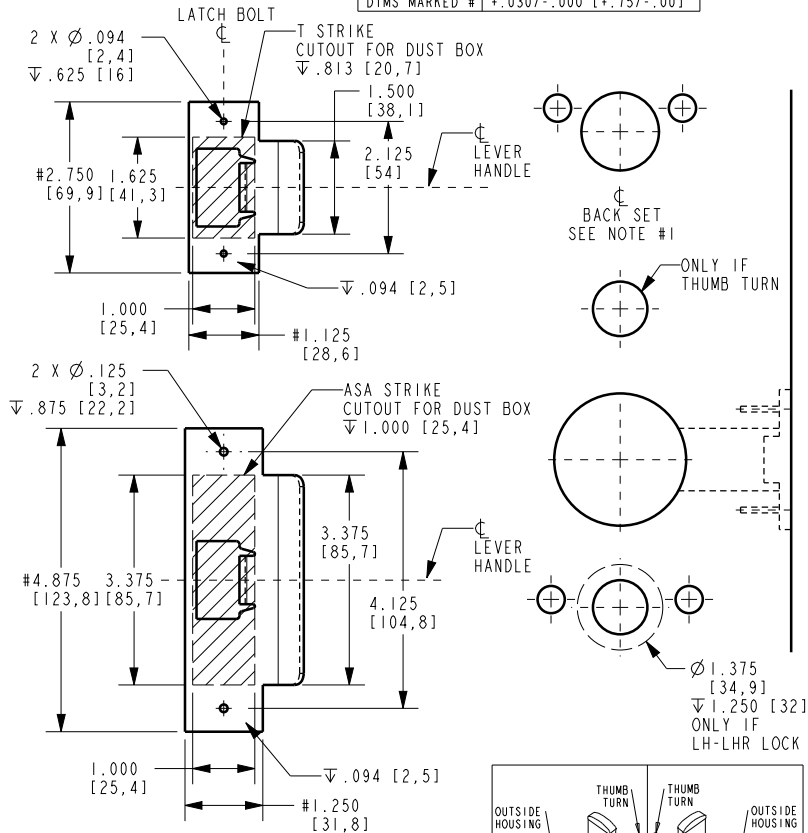
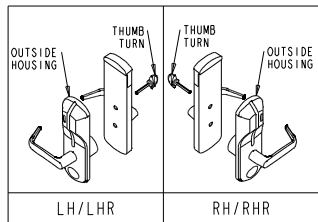
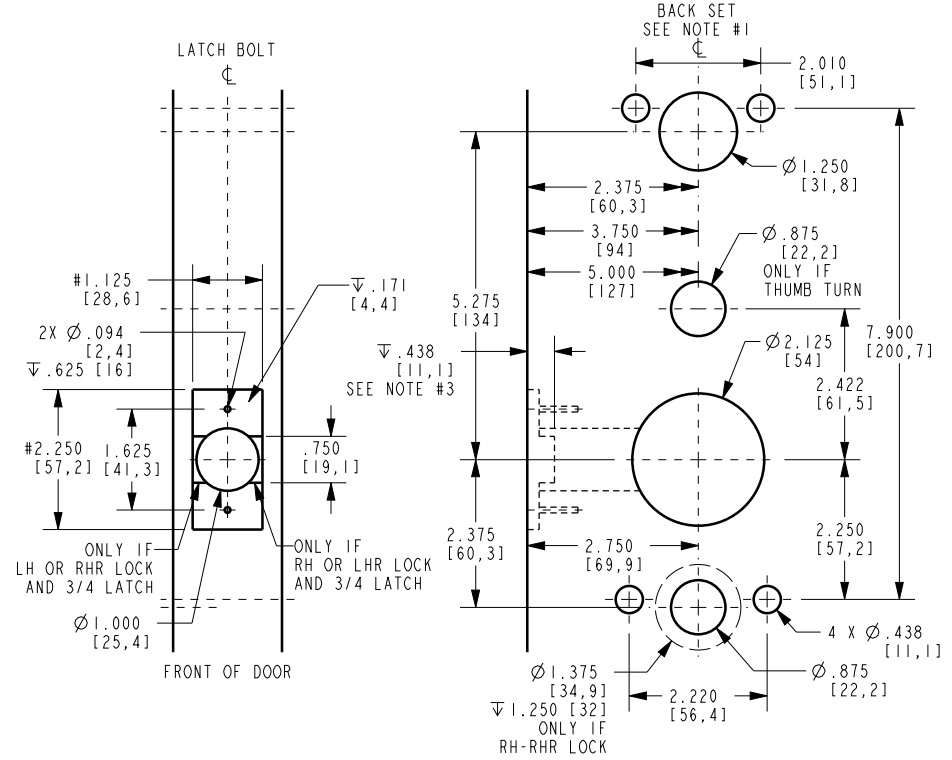


DIAGRAM A - BACK SET ADJUSTMENT FOR 3° BEVEL DOOR		
DOOR THICKNESS DIMENSION X	BACK SET ADJUSTMENT DIMENSION Y	
1.25 (31,8mm)	.032 (0,81mm)	
1.50 (38,1mm)	.039 (1,00mm)	
1.75 (44,5mm)	.046 (1,17mm)	
2.00 (50,8mm)	.052 (1,32mm)	
2.25 (57,2mm)	.059 (1,50mm)	
2.50 (63,5mm)	.065 (1,65mm)	
2.75 (69,9mm)	.072 (1,83mm)	



SYMBOLS:
 ∇ DEEP
 --- CENTER LINE
 ϕ DIAMETER
 --- NOT TO SCALE

REVISION					
REV	ECN	DESCRIPTION	FAIT PAR / MADE BY	VERIF PAR / CHK'D BY	DATE
9	14715	TITLE: 7100 ADDED; WAS 2 PAGES	P.P.	A.T.	22/11/2013
10	14835	E-PLEX 7100 WAS 7100 IN TITLE BLOCK	P.P.	A.T.	01/10/2013



LE MATERIAU ET LA FINITION DE CETTE PIECE DOIVENT RESPECTER LES DIRECTIVES ENVIRONNEMENTALES; REFERENCE AU STANDARD D'INGENIERIE DE KABA ES-073.
 MATERIAL AND FINISH OF THIS PART TO COMPLY WITH ENVIRONMENTAL DIRECTIVES; REFERENCE TO KABA'S ENGINEERING STANDARD ES-073.

XXX	DIMENSIONS CRITIQUES / CRITICAL DIMENSIONS	SANS AUTRES SPECIFICATIONS, LES DIMENSIONS SONT EN POUCES ET S'APPLIQUENT APRES FINITION.	DESIGNER: J.P. DAUSSEIGN	DATE: 01FE99
PROJ	PROJECTION 3 rd ANGLE / THIRD-ANGLE PROJECTION	UNLESS OTHERWISE SPECIFIED, DIMENSIONS ARE INCH (millimeter) AND APPLY AFTER FINISH.	CONCU PAR: J.P. DAUSSEIGN	DATE: 27JN99
NE PAS MESURER SUR LE DESSIN / DO NOT SCALE DRAWING			VERIFIE PAR: -	DATE: -
DIMENSIONING AND TOLERANCING AS PER AMERICAN SOCIETY OF MECH ENGINEERS / LE CONVENTIONNEMENT EST DE KABA. CE DOCUMENT DEVIRA ETRE RETOURNE SUR DEMANDE A KABA.			APPROVE PAR: -	DATE: -
THIS DOCUMENT IS PROPERTY OF KABA. THE DATA CONTAINED IS PROPRIETARY AND SHALL NOT BE COPIED OR DISCLOSED TO A THIRD PARTY WITHOUT WRITTEN CONSENT OF KABA. THIS DOCUMENT WILL BE RETURNED TO KABA UPON DEMAND.			MATERIAU / MATERIAL	NOT APPLICABLE
UNE VERSION FRANCAISE DE CE DOCUMENT EST DISPONIBLE SUR DEMANDE.			FINITION / FINISH	NOT APPLICABLE
			Traitement thermique / Heat treatment	NOT APPLICABLE

KABA
 7301, Deserrie Blvd
 Montreal, QC Canada
 H4P 2G7
 www.kaba-itco.com

DOOR PREPARATION
 CYLINDRICAL UNIT BS 2-3/8, 2 3/4, 3-3/4 AND 5
 SOLITAIRE 710/740/850/850L/950/E-PLEX 7100

FORMAT	NO PIECE / PART NO:	NO DESSIN / DRAWING NO:
	N/A	IP-508661
ECH SCALE	SEE VIEWS	PG SHT DE OF I